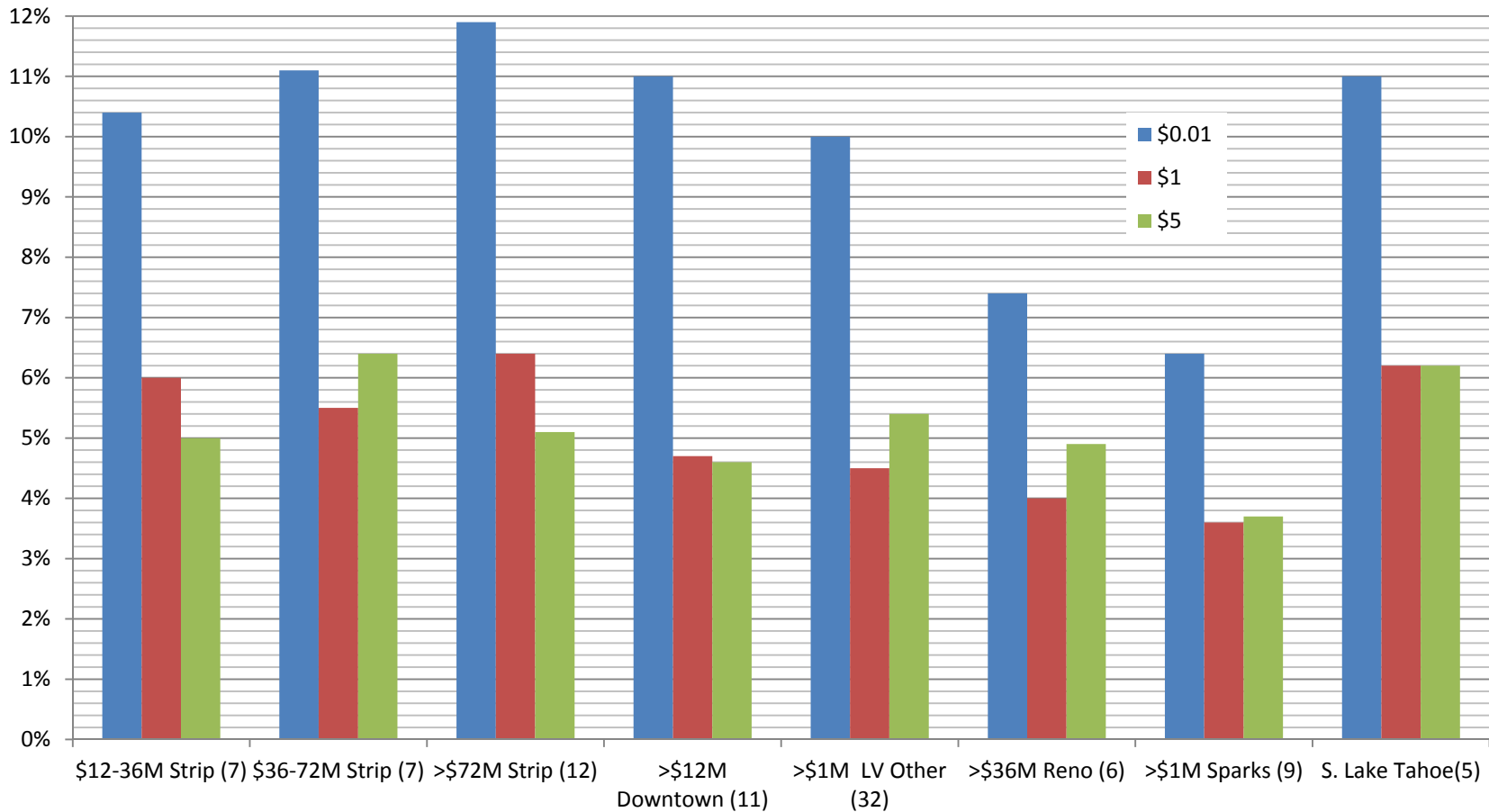


Nevada Casino's Hold %s for Slot Machines

Feb 1, 2014 to Jan 31, 2015



“Hold %” is what the casino keeps. “Return to Player” aka “Payback %” is 100% - Hold %

Your bankroll generally lasts twice as long with a 5% Hold vs. a 10% Hold

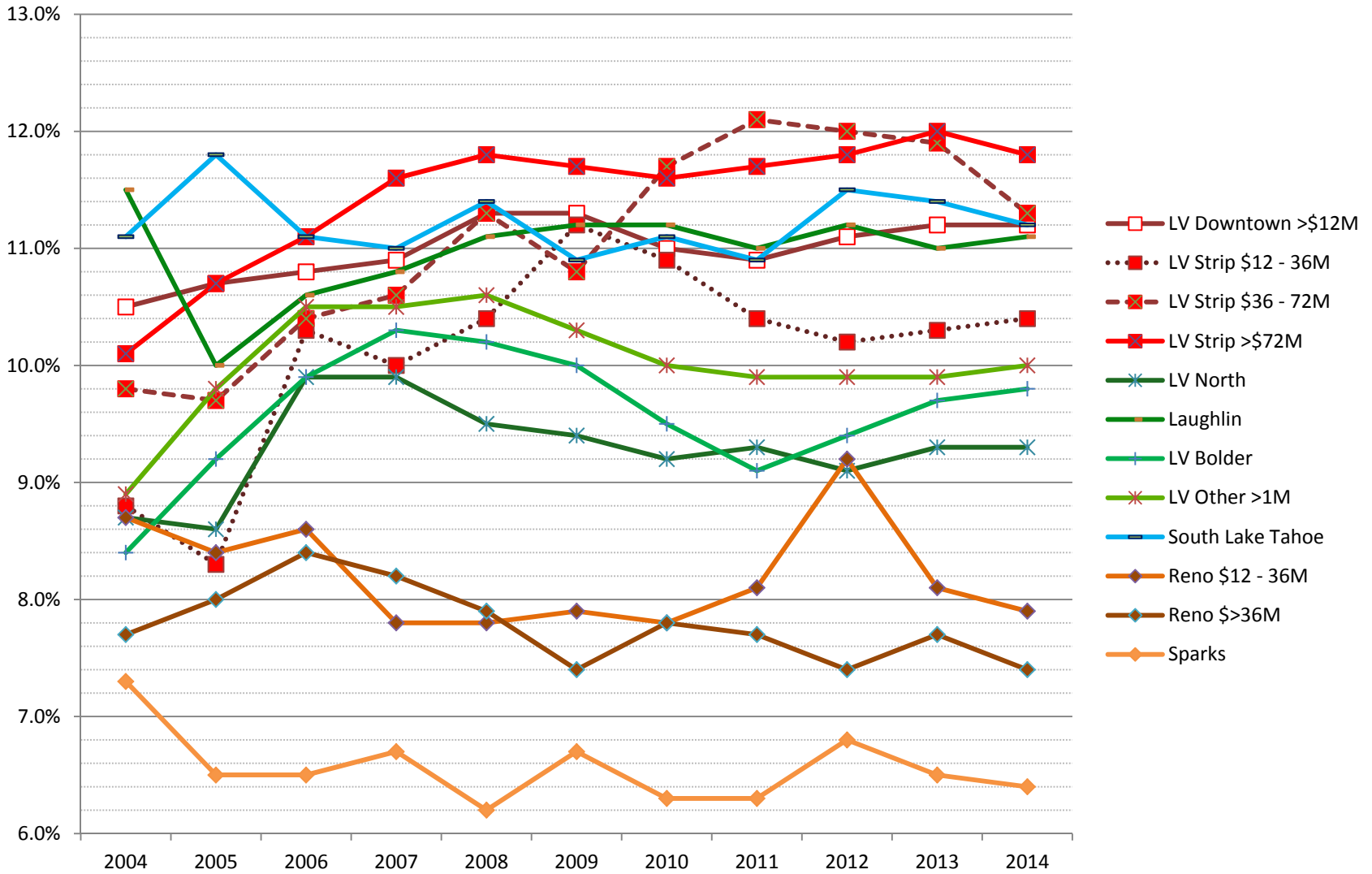
Casinos are grouped by area and size. The number in parenthesis shows the number of casinos in that group.

Use the Slot Machine Calculator – www.RandomSSSlots.com

Nevada Casinos – Penny Slots Hold %

2004 – 2014

By Region and Size

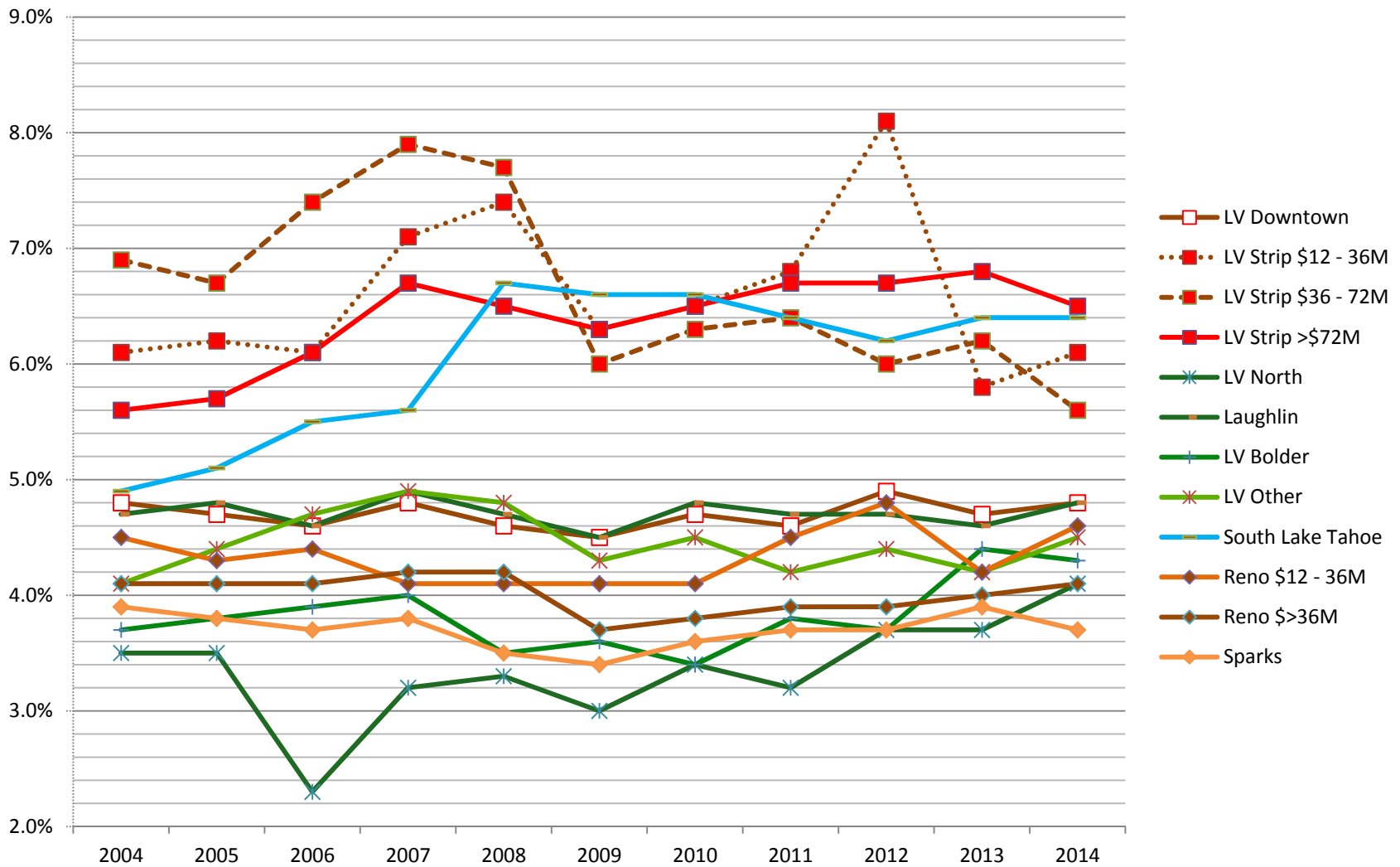


Use the Slot Machine Calculator – www.RandomSSSlots.com

Nevada Casinos – Dollar Slots Hold %

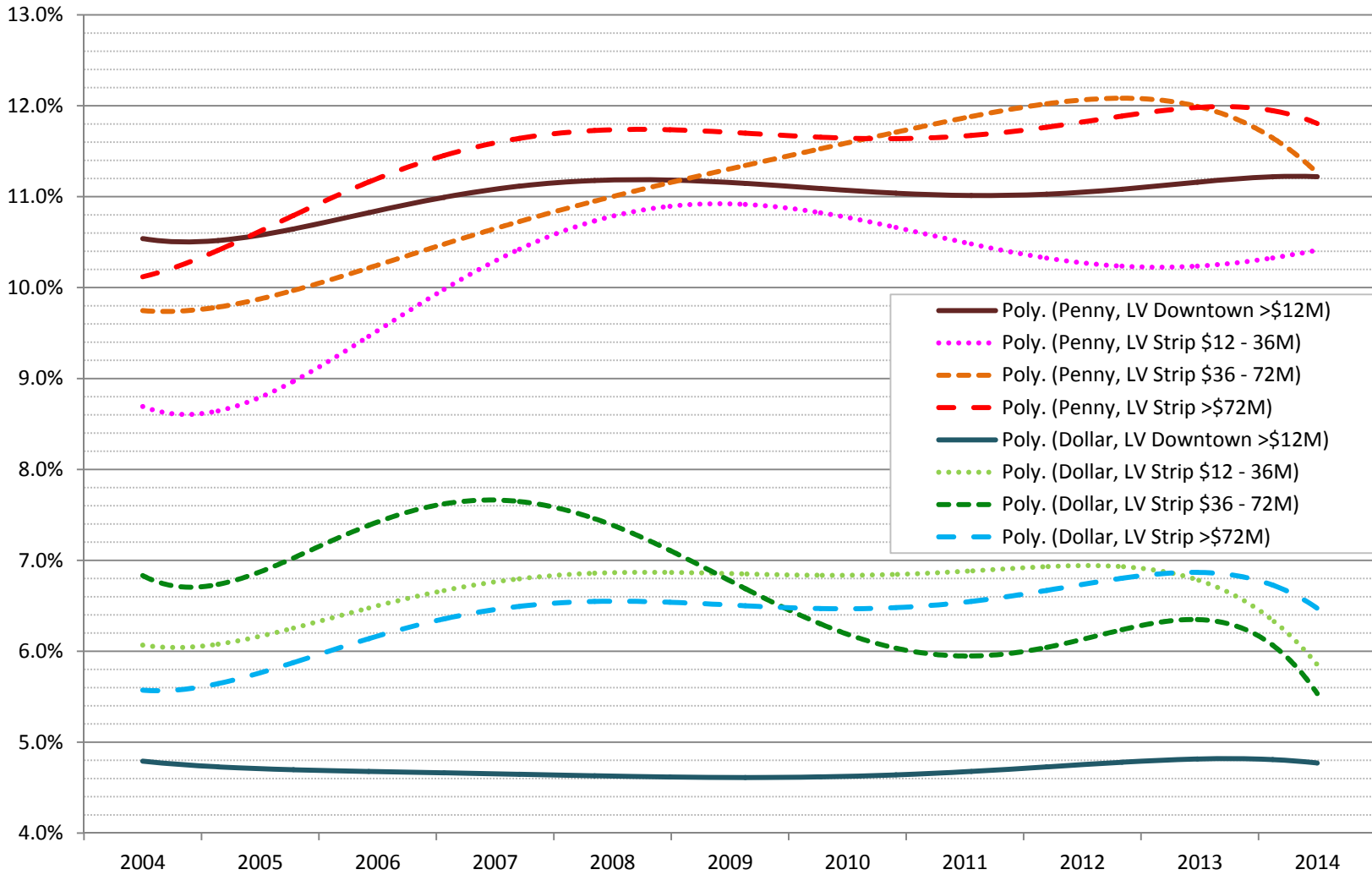
2004 – 2014

By Region and Size



Las Vegas (Strip & Downtown) Hold %s Trend Lines

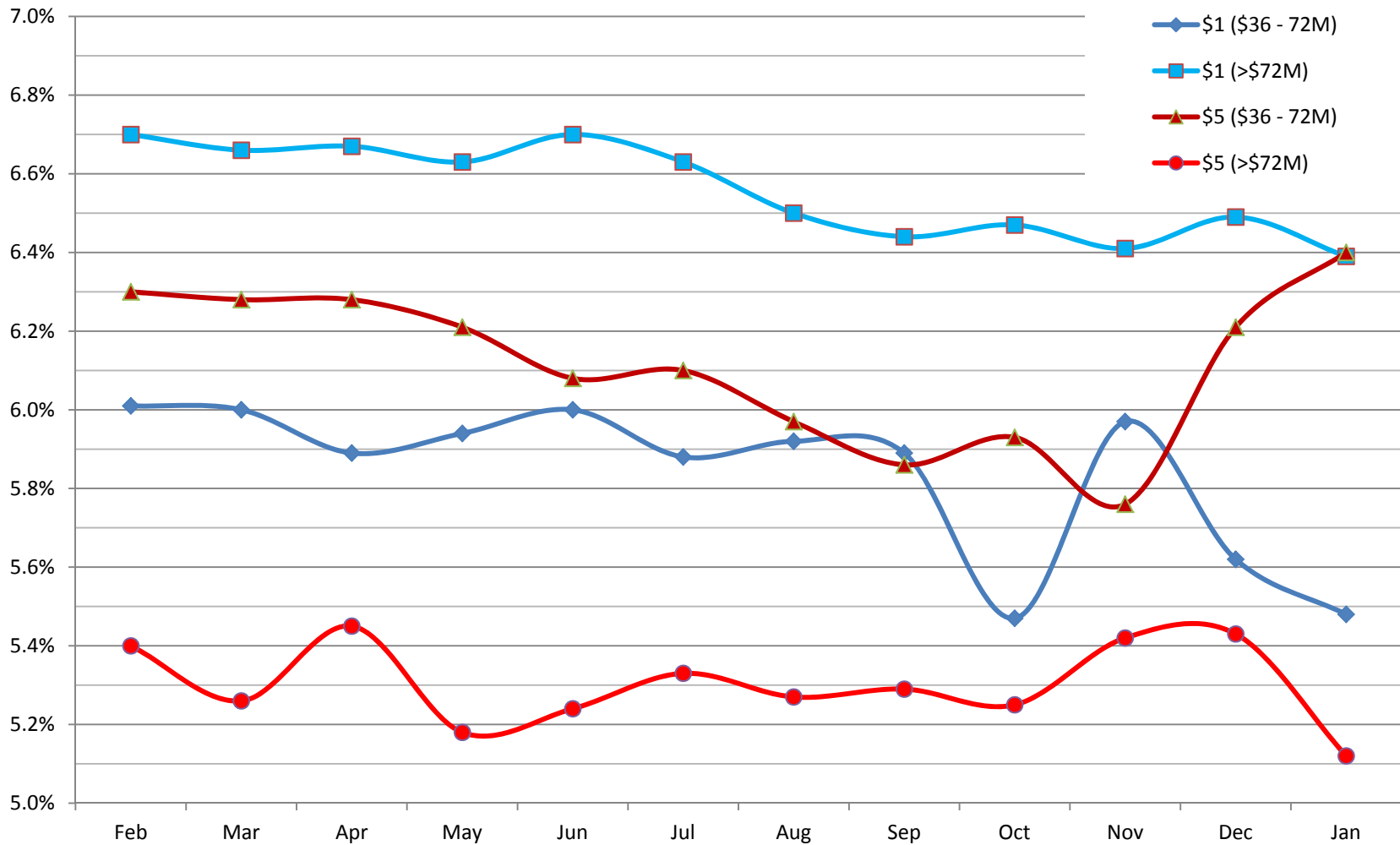
Grouped by Area, Casino Size and Penny/Dollar Denomination
2004 – 2014



Hold %s for \$1 and \$5 Slots by Month

Major Las Vegas Strip Casinos

Feb 2014 – Jan 2015



Use the Slot Machine Calculator – www.RandomSSlots.com

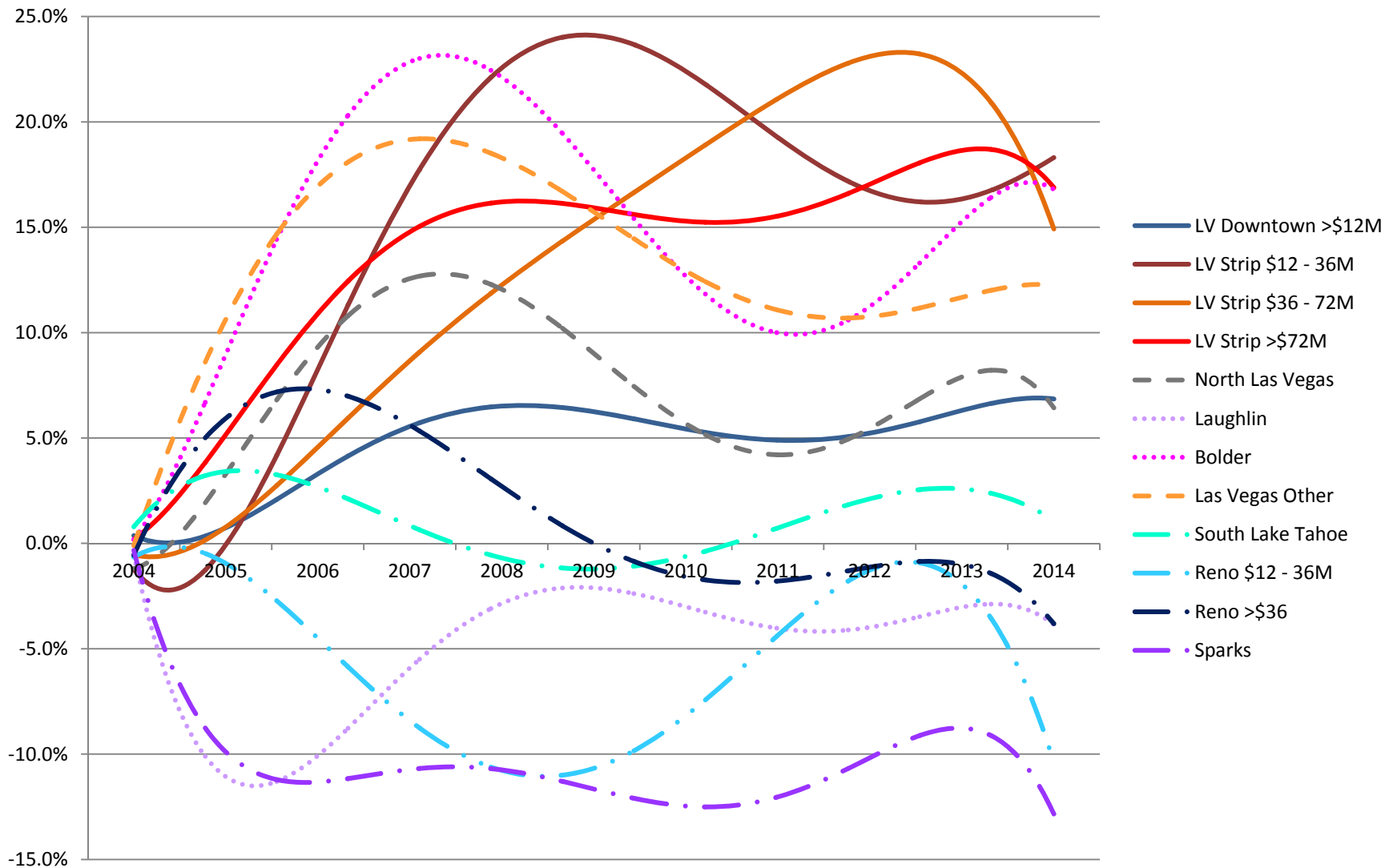
Relative % Change in Hold for Penny Slots Compared to 2004

(e.g. if Hold % in 2004 was 10%, and Hold % in 2014 was 12%, the chart shows +20% Change)

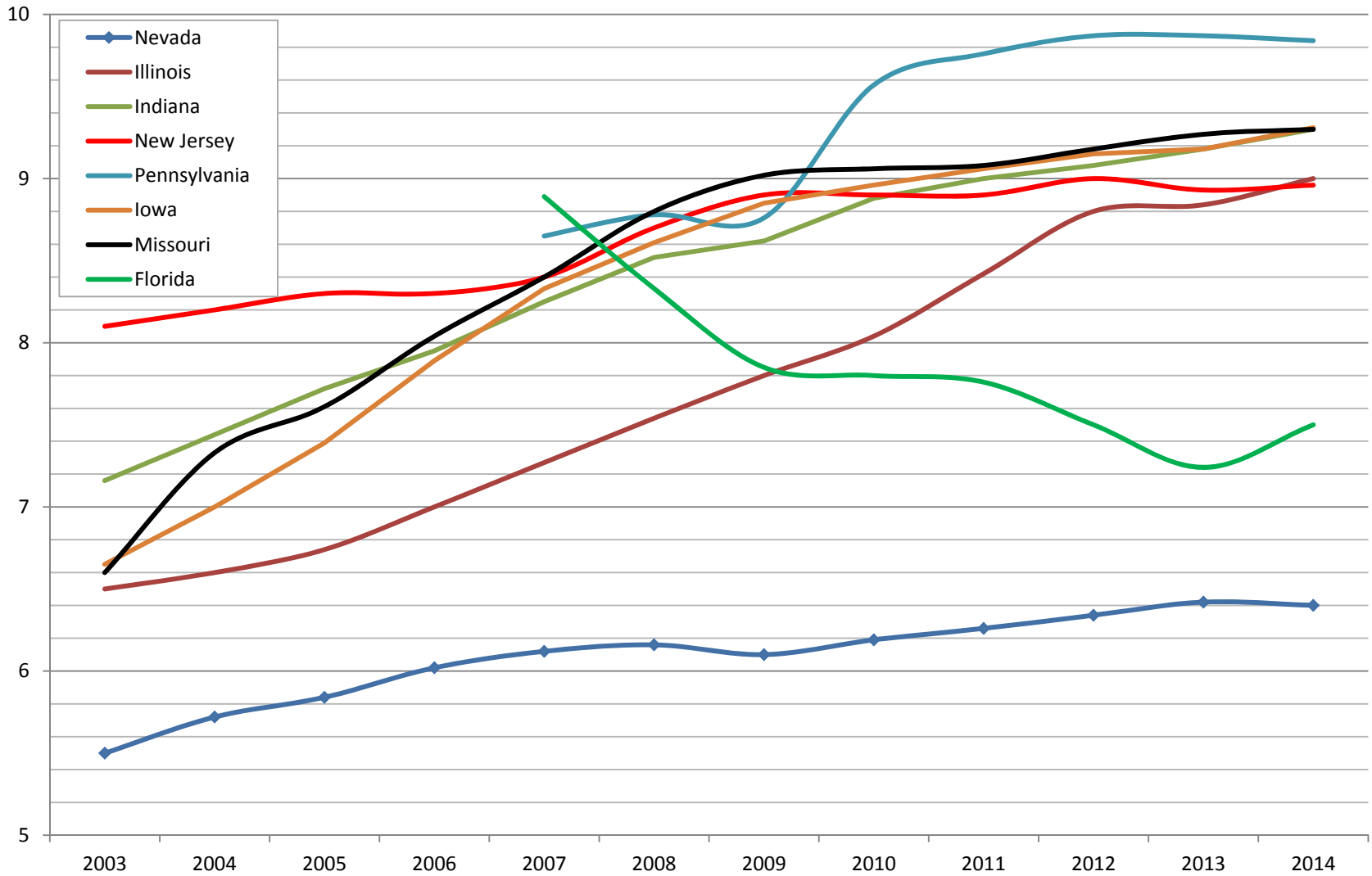
Trend Lines based on 5th Order Polynomials (actuals in a given year will be different)

Note: This chart does not tell you the absolute Hold %s for any given region or year.

If Hold % in 2014 have change by +16% since 2004 in a particular casino, your money lasts 16% less time in that casino.

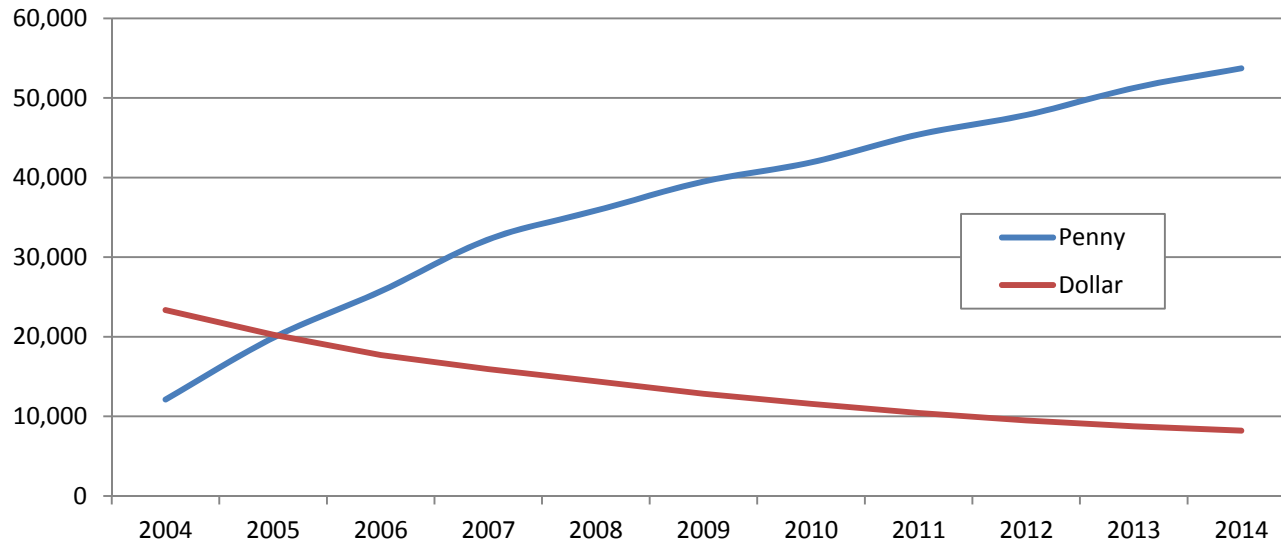


Hold % by State 2003 to 2014

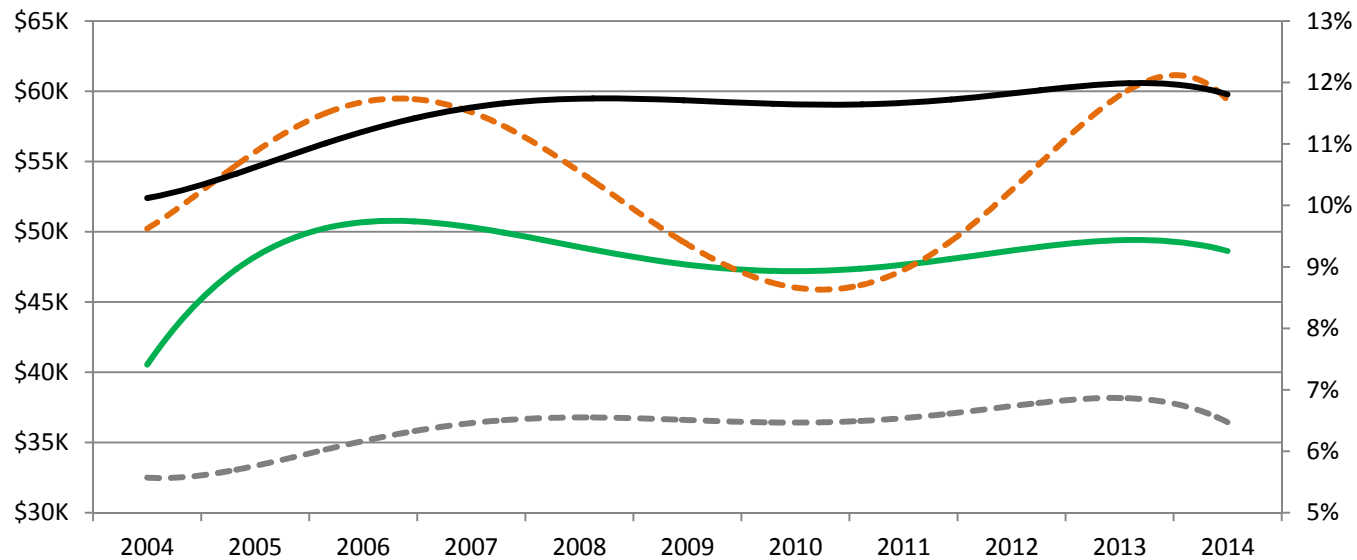


Is there a correlation between Hold % and Revenue per Machine?

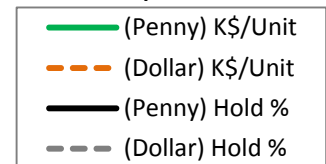
Caution: The charts draw data from different pools. Lines are 5th order polynomial fit trend lines.



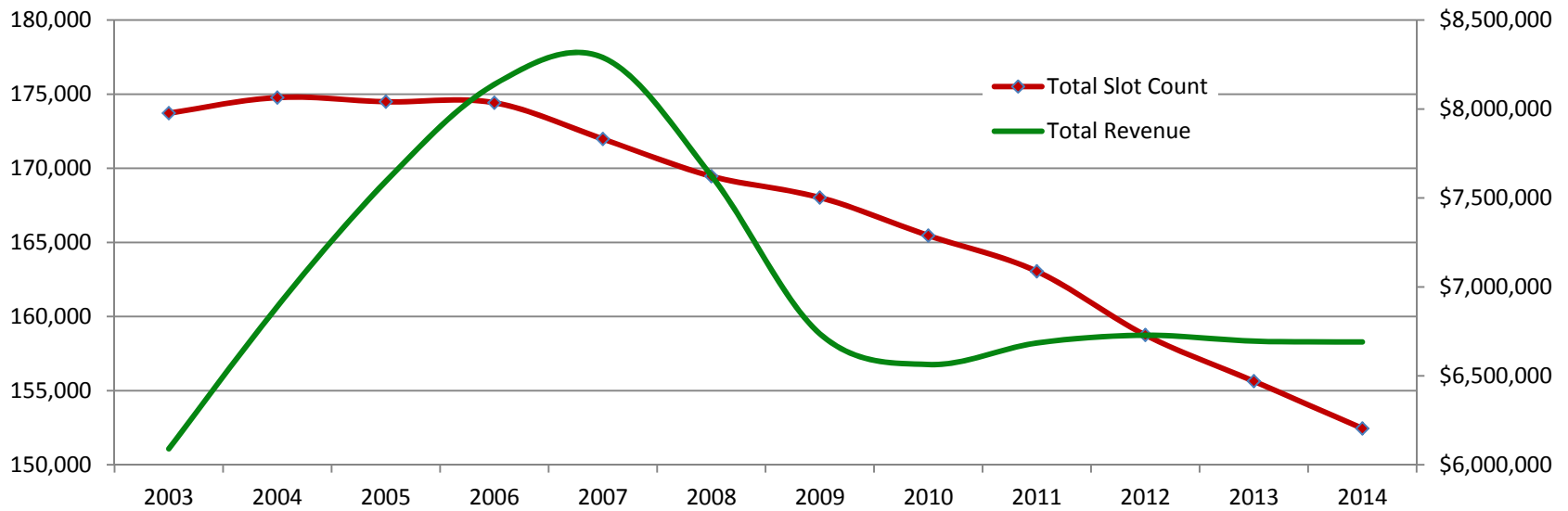
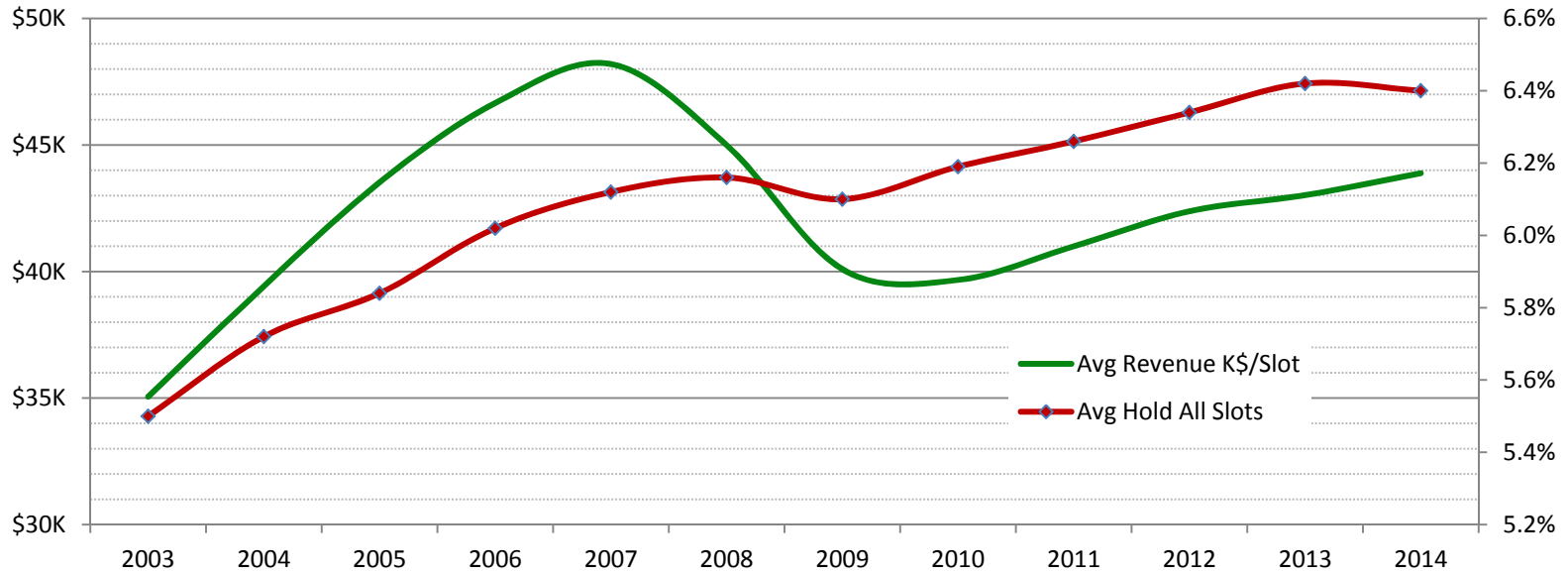
of Games
All Nevada



Strip Casinos
>\$72M



Nevada Slot Machines Totals for All Types



Use the Slot Machine Calculator – www.RandomSSSlots.com